



# HOSHIZAKI

## CERTIFICATION



HACCP International



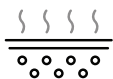
ISO9001

## RT-156MA-SSG

### UNDERCOUNTER SLIDING GLASS DOOR REFRIGERATOR



## Key Features



**Forced Evaporation  
System**

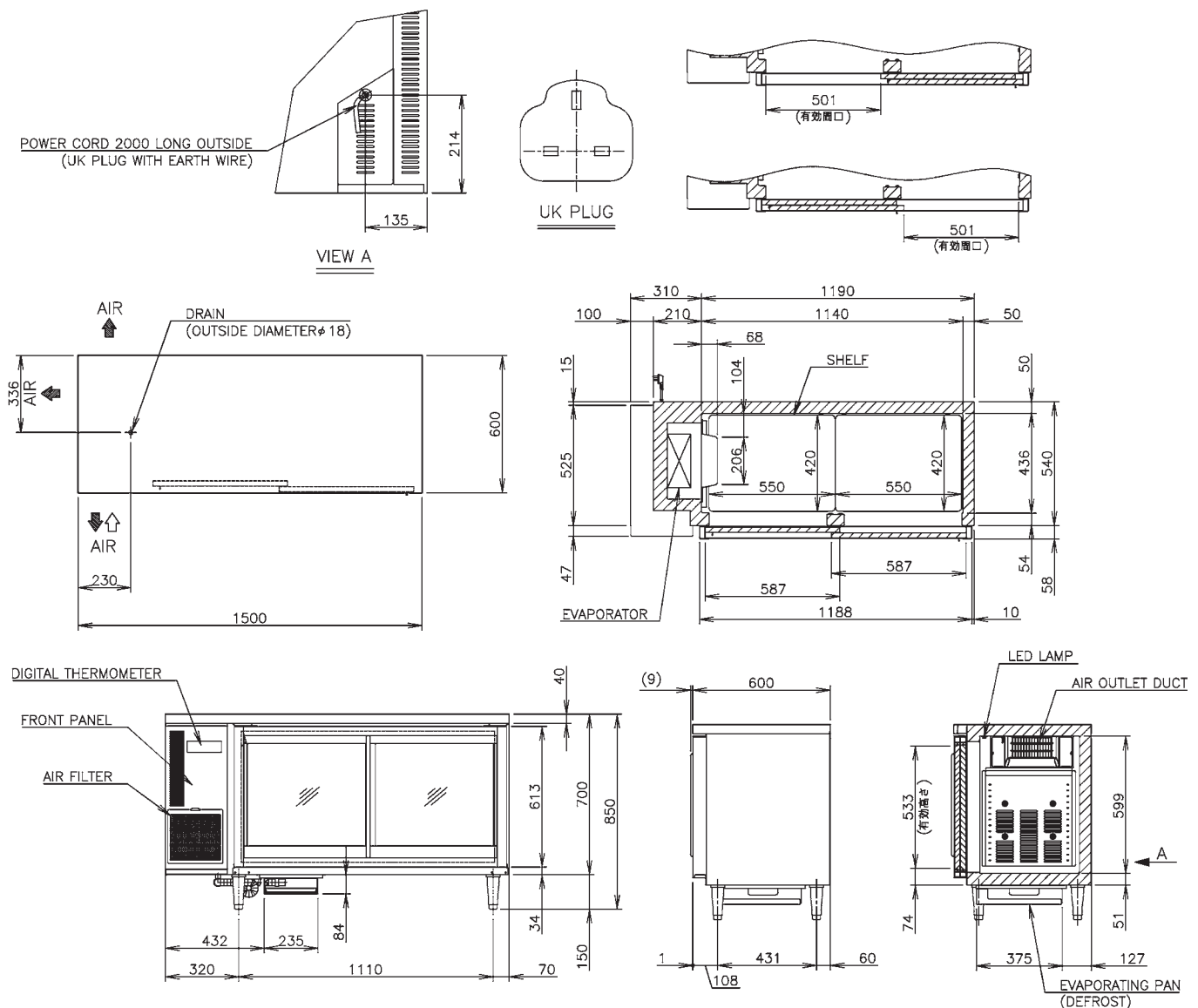


**LED Interior  
Lighting**

Our A-fit cabinet combines functionality and excellent energy performance to meet Japan quality level with precise temperature control to ensure food ingredient freshness at all time.



## Dimensions & Specifications



MODEL	RT-156MA-SSG
POWER SUPPLY	1 Phase 220-240V 50Hz Capacity: 0.5kVA (2.27A)
ELECTRIC CONSUMPTION	Motor: 258W Heater: 81W Refrigeration: 315W Defrost: 81W
TEMPERATURE CONTROL	Microprocessor (Digital Temp. Indication) Adjustable from -2 to 12° C
EFFECTIVE CAPACITY	318L
WEIGHT	Net: 98kg (Gross: Approx. 103kg)
OUTSIDE DIMENSIONS	1500mm(W)× 600mm(D)×850(-880)mm(H)
PACKAGE	Carton: 1565mm(W)×680mm(D)×790mm(H)
AMPERAGE	Rated: 2.0A
SHELF	4 pcs
OPERATING CONDITIONS	Ambient Temperature: 5 - 38°C, Voltage Range: Rated Voltage $\pm 6\%$



# HOSHIZAKI

## HOSHIZAKI (THAILAND) LIMITED

No. 99 CP Tower North Park building 9th Floor, Zone D1, Soi Ngamwongwan 47  
Intersection 42, Thung Song Hong, Subdistrict, Lak Si District, Bangkok 10210

TEL +66 2 005 9980 FAX +66 2 516 2646 <https://hoshizaki.co.th/en/>

